

**Prepared For:**

Client Name  
Client Address  
Poplar Bluff, MO

**Conducted By:**

Aire Serv Heating & Air  
Conditioning  
573-778-9007

**Test Period:**

9/21/06 – 9/27/06

**Monitor ID:**

#7049

**Report ID:**

#66524

This report offers recommendations so you can make informed decisions about your family's health, comfort and safety. Knowing what's in the air you breathe and what you can do about it has never been more important. If you have additional questions, visit [www.airadvice.com](http://www.airadvice.com) or call 503-295-6610.

## HEALTH



Action  
Necessary

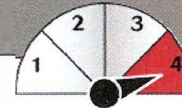
### Particle Allergens, Chemical Pollutants

- ▶ **Particle Allergens:**  
Levels are significantly elevated
- ▶ **Chemical Pollutants:**  
Levels improvable

- Inadequate filtration
- Build-up of chemical pollutants

- Add VOC reduction device
- Remove VOC sources
- Upgrade filtration

## COMFORT



Action  
Necessary

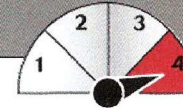
### Temperature Relative Humidity

- ▶ **Temperature:**  
Somewhat too cool
- ▶ **Relative Humidity:**  
Too moist

- Inadequate temperature setpoint or inadequate thermostat
- Inadequate dehumidification

- Check thermostat for proper setpoint and function
- Upgrade dehumidification equipment
- Add ventilation

## SAFETY



Action  
Necessary

### Carbon Monoxide

- ▶ **Carbon Monoxide:**  
Levels significantly elevated

- Carbon monoxide source in home or garage

- Remove carbon monoxide source in home or garage

**What We Tested**

**What We Found**

**Possible Causes**

**Recommended Action**

# Health: Chemical Pollutants

## TEST RESULTS

**What We Found:** Chemical pollutant levels were between 301-500 ug/m<sup>3</sup> for a day or more.

Action Recommended  
for Sensitive Individuals

### Why is action recommended?

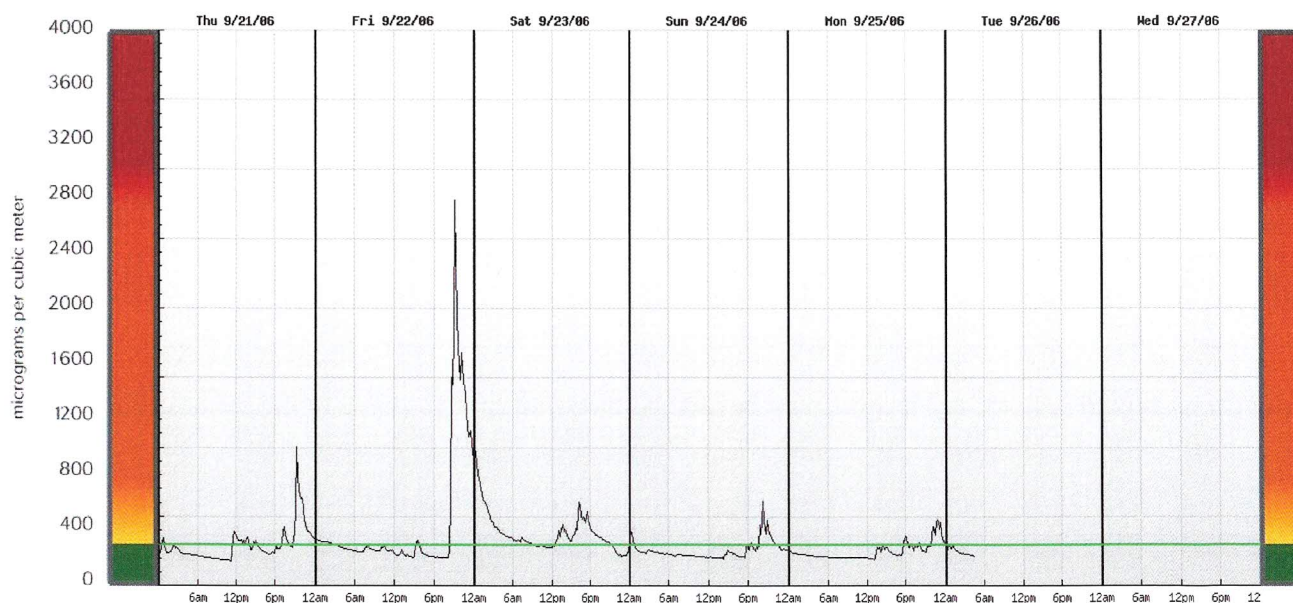
Chemical pollutants are generally a cause for concern when daily average levels are above 300 ug/m<sup>3</sup>.

*Chemical pollutants are known to trigger asthma and allergy symptoms. At moderate levels, eyes and nasal passages can be irritated. Some people can experience nausea and headaches. At very high levels, they can even affect normally healthy adults by overworking the liver and kidneys. Children, the elderly, and pregnant women are more susceptible.*

Source: European Union (EU); Leadership in Energy & Environmental Design (LEED); Environmental Protection Agency at Research Triangle Park (EPA-RTP).

[www.airadvice.com](http://www.airadvice.com)

© 2006 AirAdvice, Inc.  
ALL RIGHTS RESERVED



Highest Daily Average: 434 ug/m<sup>3</sup>

Highest Hourly Average: 2026 ug/m<sup>3</sup>

Overall Average: 323 ug/m<sup>3</sup>

## ABOUT CHEMICAL POLLUTANTS

Levels can build up in your home's air due to usage of chemical products and heating/cooling system issues.

Sources: Off-gassing from building materials, carpeting, furniture and other synthetic materials, fuel fumes, scented products and air fresheners, personal care products, many household products such as paint, glue, and plastics.

Possible heating & cooling issues: Lack of fresh air introduced into home (either inadequate mechanical ventilation or none present), no chemical pollutant removal equipment.

## RECOMMENDED ACTION

There are many steps you can take to control sources of chemical pollutants. You can:

- Add ventilation
- Add VOC reduction device



# Health: Particle Allergens

## TEST RESULTS

**What We Found:** Allergen levels were above 40 ug/m<sup>3</sup> for one or more days.

Action  
Necessary

### Why is action necessary?

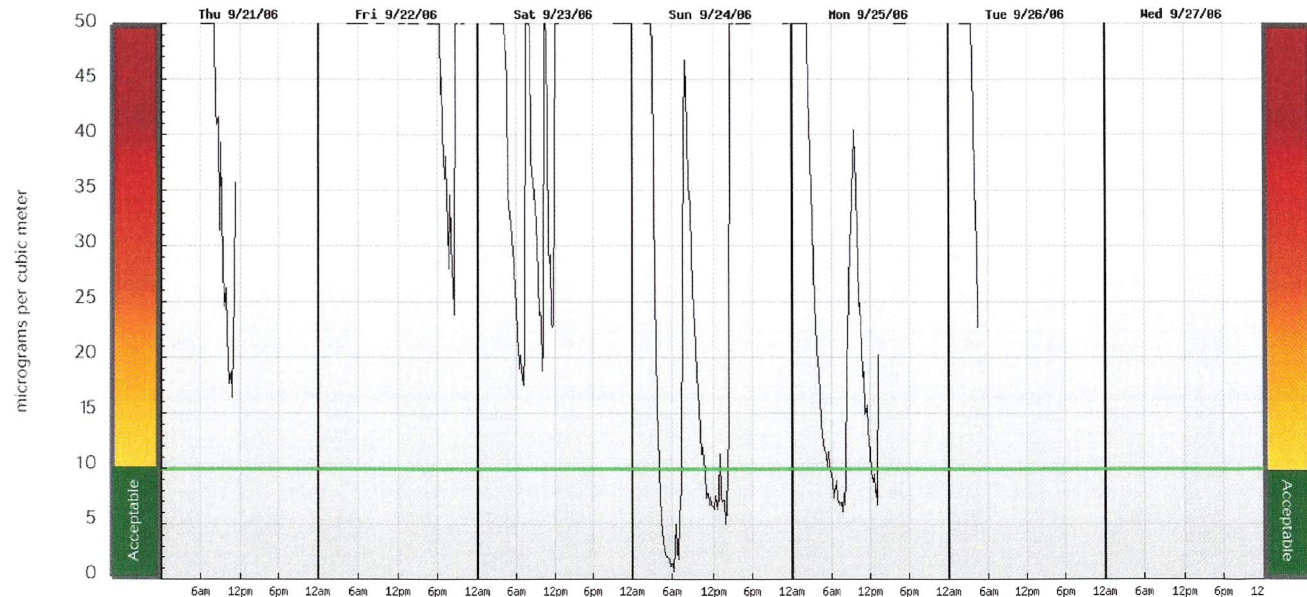
Particle allergens are generally a cause for concern when daily average levels are above 10 ug/m<sup>3</sup>.

*Particle allergens are known to trigger asthma and allergy symptoms. At levels above 40 ug/m<sup>3</sup>, they can harm normally healthy adults by causing emphysema and diminished lung capacity. Children, the elderly, and pregnant women are more susceptible.*

Source: American Lung Association; Environmental Protection Agency (EPA); Indoor air Quality Association (IAQA).

[www.airadvice.com](http://www.airadvice.com)

© 2006 AirAdvice, Inc.  
ALL RIGHTS RESERVED



Highest Daily Average: 90 ug/m<sup>3</sup>    Highest Hourly Average: 150 ug/m<sup>3</sup>    Overall Average: 56 ug/m<sup>3</sup>

## ABOUT PARTICLE ALLERGENS

Particle allergens are always present in your home's air. They can build up to unhealthy levels due to activities in the home, the presence of excessive sources, and heating & cooling system issues.

Sources: Pets, dirt on shoes, burning candles, smoking, open windows (outside pollen, spores, etc.), dust mites, many common household activities, including cooking and cleaning.

Possible heating & cooling issues: Leaky, dirty, or poorly designed ductwork, inadequate filtration, no filtration at all.

## RECOMMENDED ACTION

There are many steps you can take to control sources of particle allergens. You can:

- Clean, replace or upgrade Filter
- Seal duct work
- Clean duct work
- Install stove fan for use during cooking